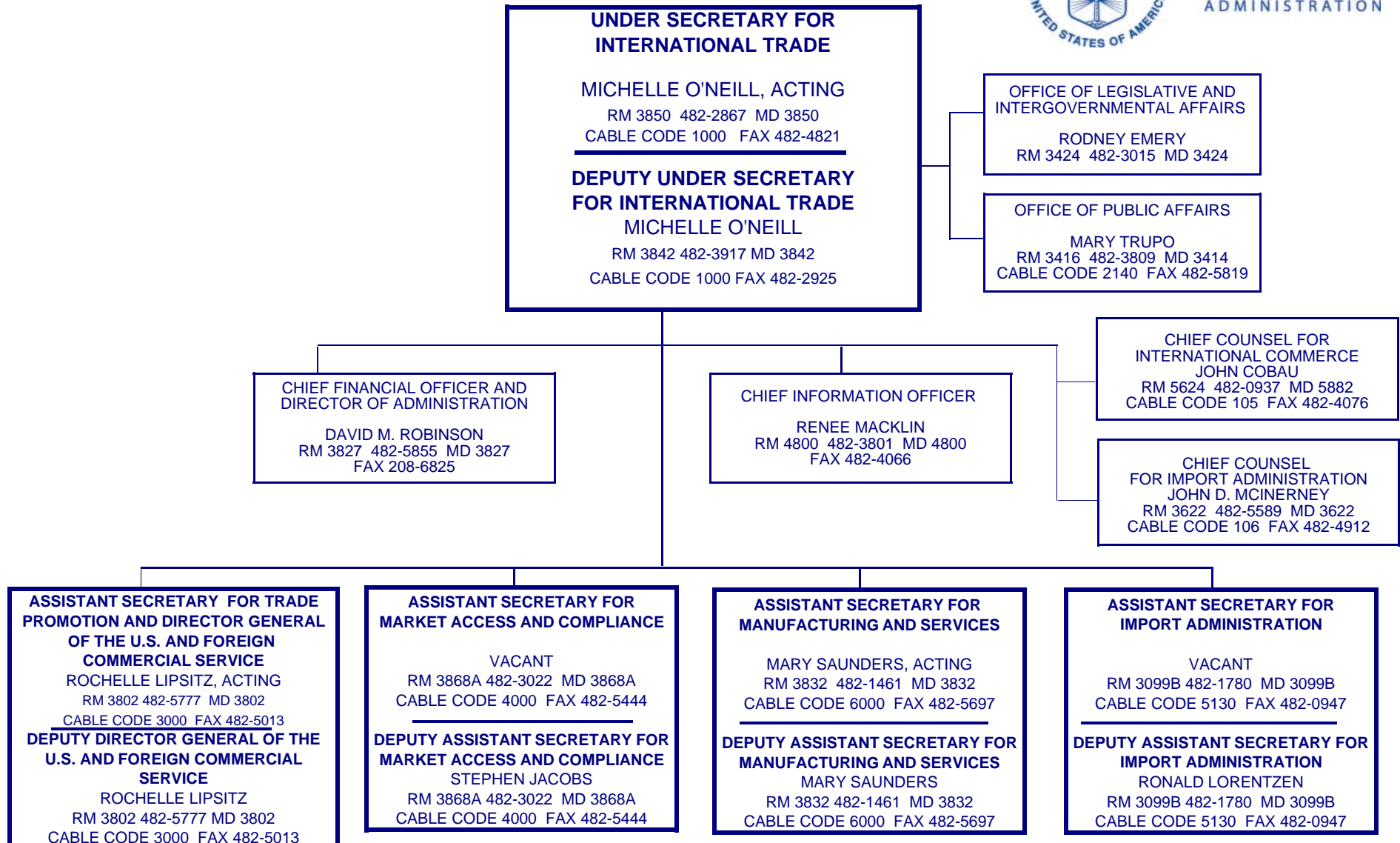


**U.S. DEPARTMENT OF COMMERCE
INTERNATIONAL TRADE ADMINISTRATION
WORK REFERENCE CHART**



NOTE: This is a working document and represents the ITA office-level organizational structure. Some persons are designated as acting pending the completion of personnel actions. This chart depicts only persons for which personnel actions have been submitted. The most up-to-date chart can be accessed via the CFO Website (<http://ita.doc.gov/ooms/itawrc.htm>).

SOURCE: Office of Organization and Management Support
NOVEMBER 2009